

**Influence of Climatic variability's on the
incidence of pests of honey bee
Apis mellifera in Gird Zone of
Madhya Pradesh.**

Swati Singh , Rajesh Verma

And

S. K. Chaturvedi

RVSKVV, Fruit Research Station ,

Entkhedi ,Bhopal(M.P.)

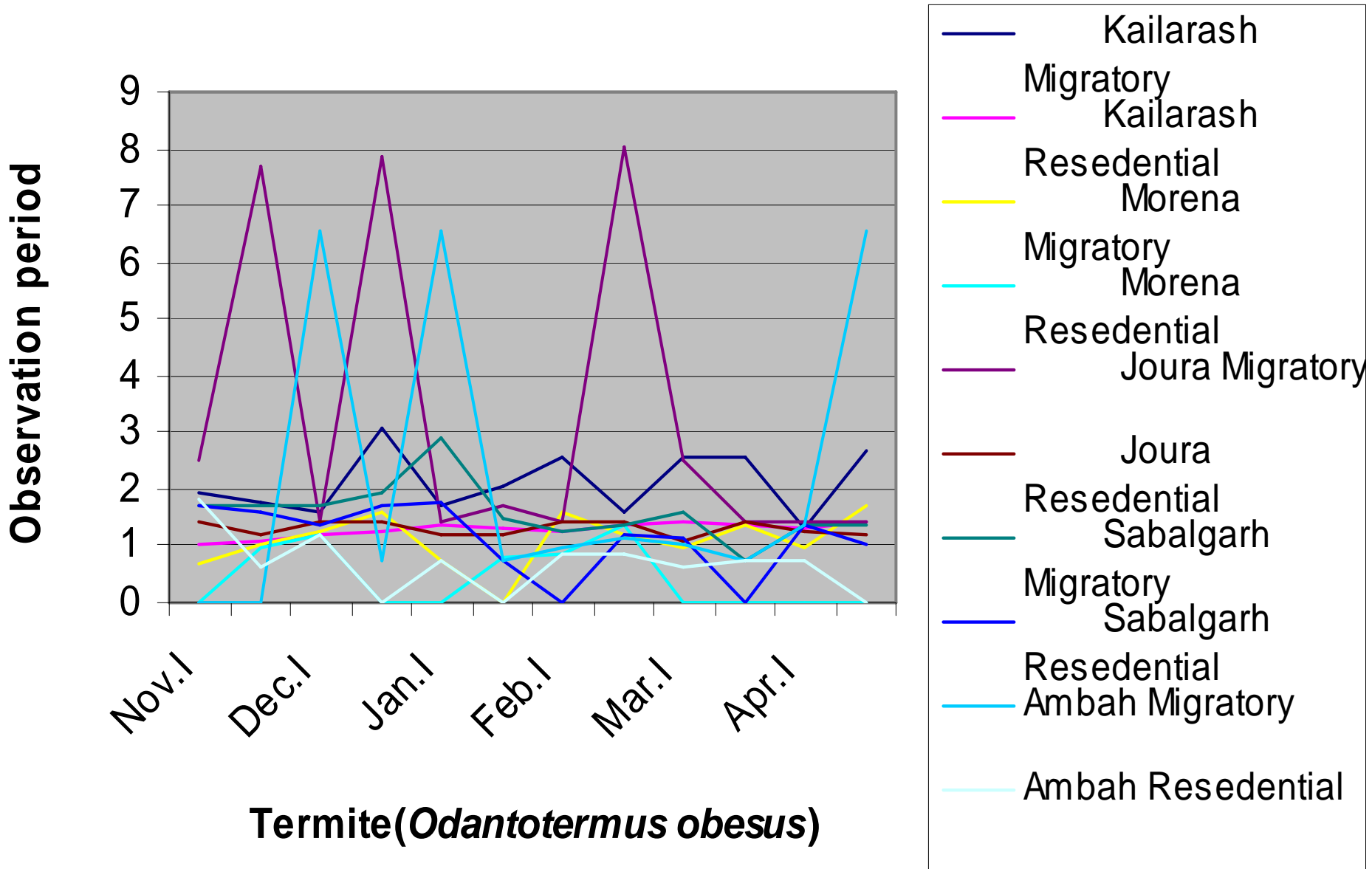
Introduction

Gird Zone lies between the latitude ranging from $24^{\circ}10'$ to $26^{\circ}50'$ and longitude from $76^{\circ}27'$ to $79^{\circ}10'$ east . The zone spread over district of Morena , Bhind ,Gwalior , Shivpuri , and half part of Datia & Guna.

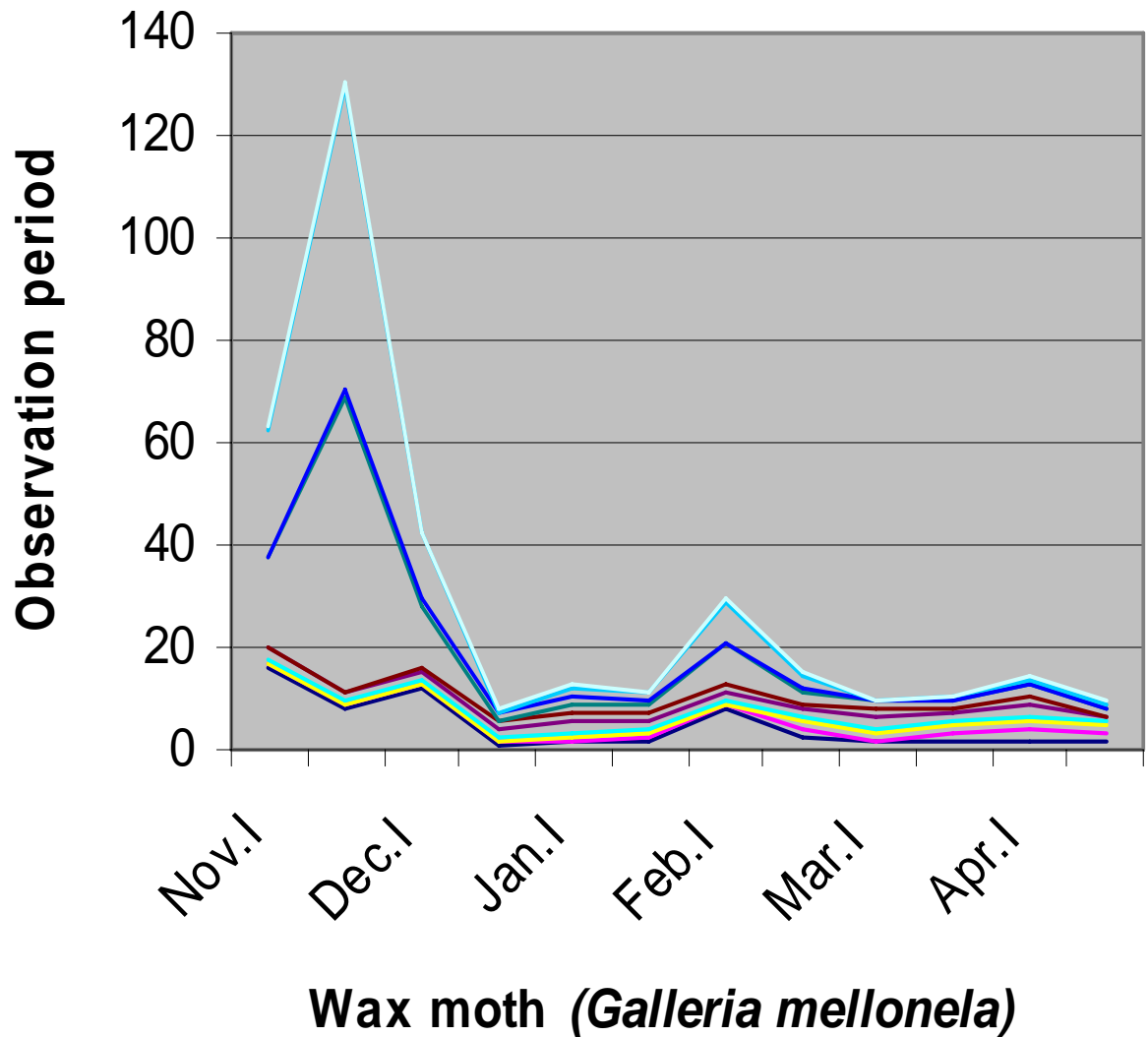
Climate of Gird Zone

Present investigation was carried out to know the status of pests and predators of honey bee (*Apis mellifera*) in migratory and residential apiaries and influence of weather factors on their activities. The climate of gird zone is semi arid with the extremely hot during May-June (max. 47 °C and extremely cold in January (min 1 °C). The mean annual rainfall 701mm mostly concentrate in the month of July and August. Normally on set SW-monsoon comes in last week of June.

Occurance of honey bee pests in residential & migratory apiaries in different blocks of Morena district.

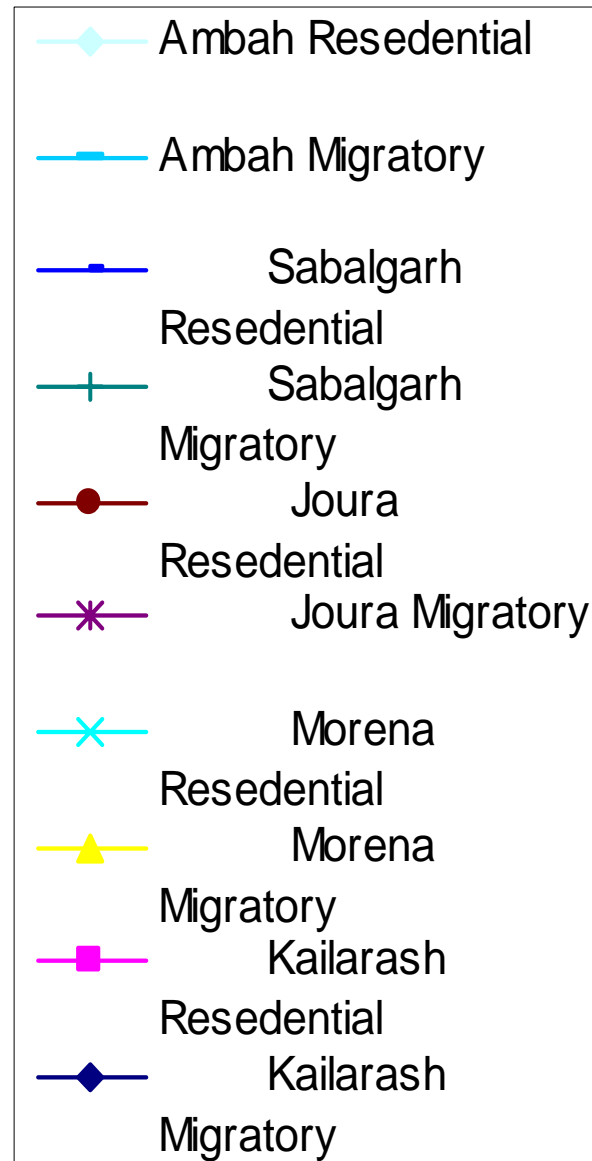
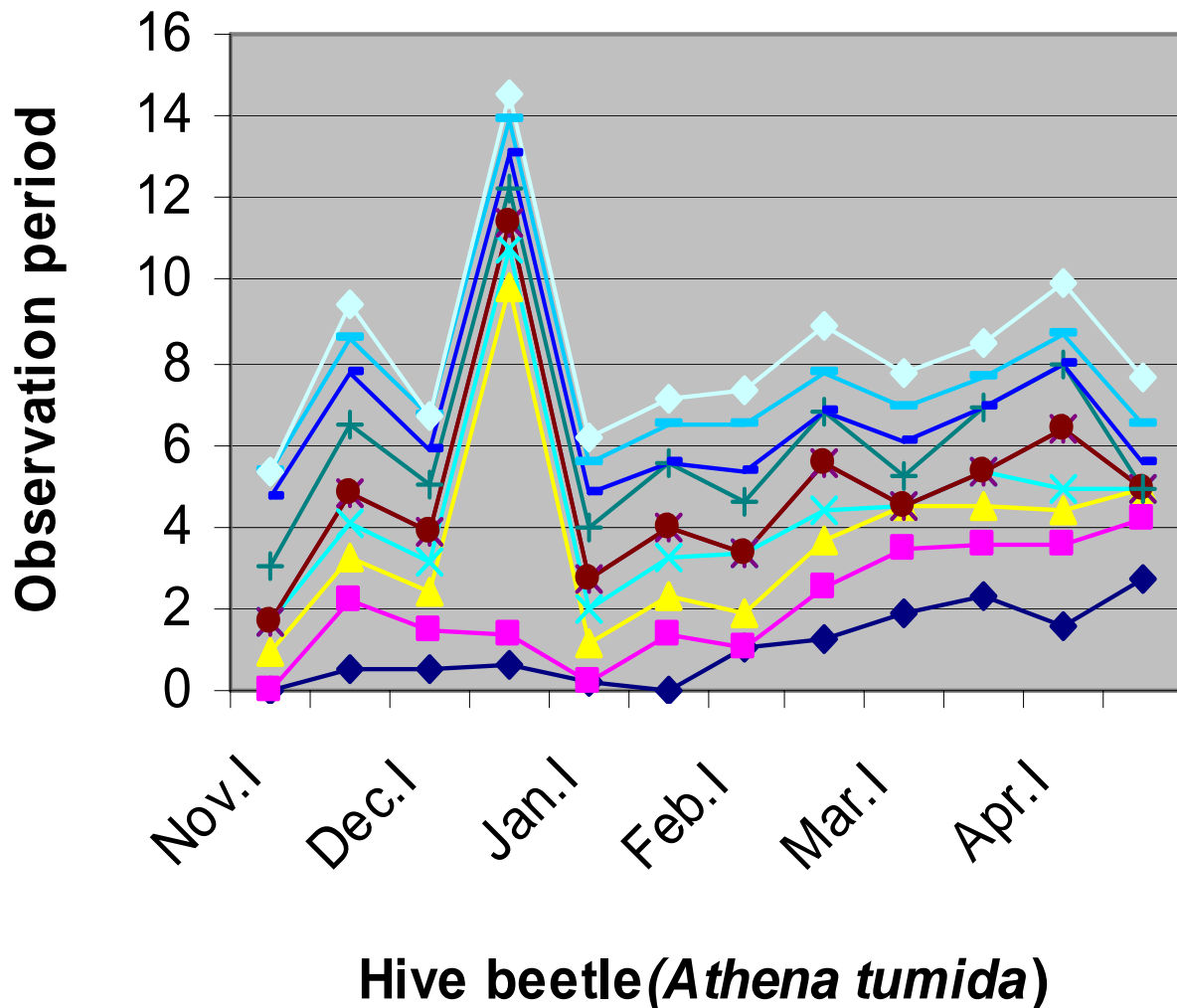


occurrence of honey bee pests in residential & migratory apiaries in different block of Morena district.

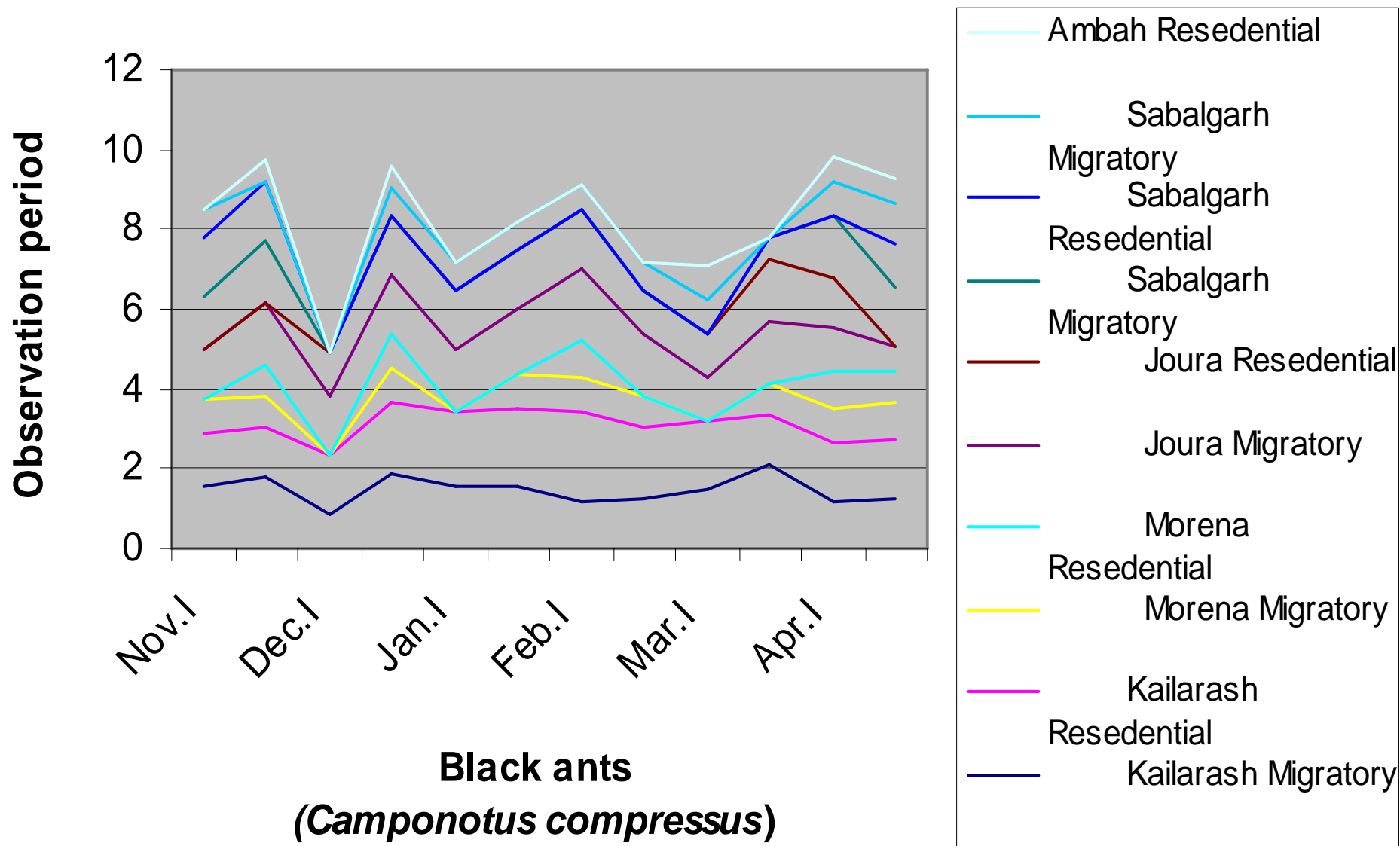


- Ambah Residential
- Ambah Migratory
- Sabalgarh Residential
- Sabalgarh Migratory
- Joura Residential
- Joura Migratory
- Morena Residential
- Morena Migratory
- Kailarash Residential
- Kailarash Migratory

Occurance of honeybee pests in residential & migratory apiaries in different blocks of Morena district.

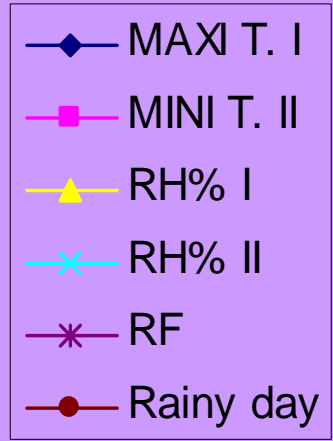
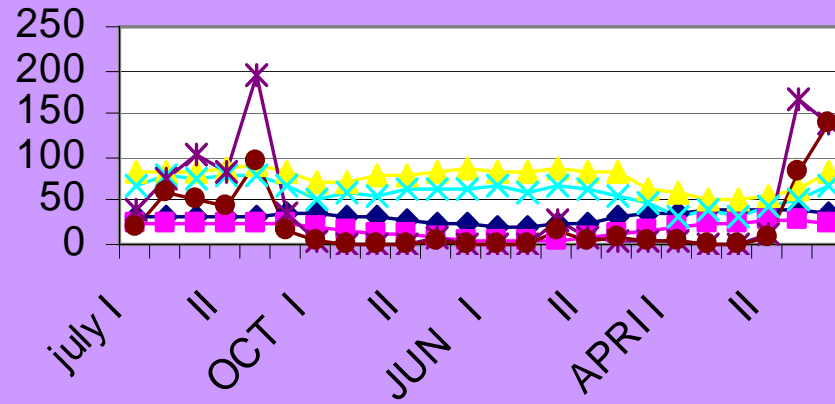


Occurance of honeybee pests in residential & migratory apiaries in different blocks of Morena district.



Observation period
fort nightly.

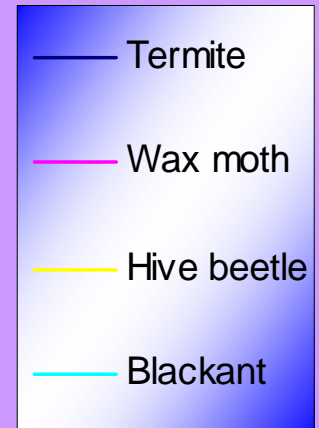
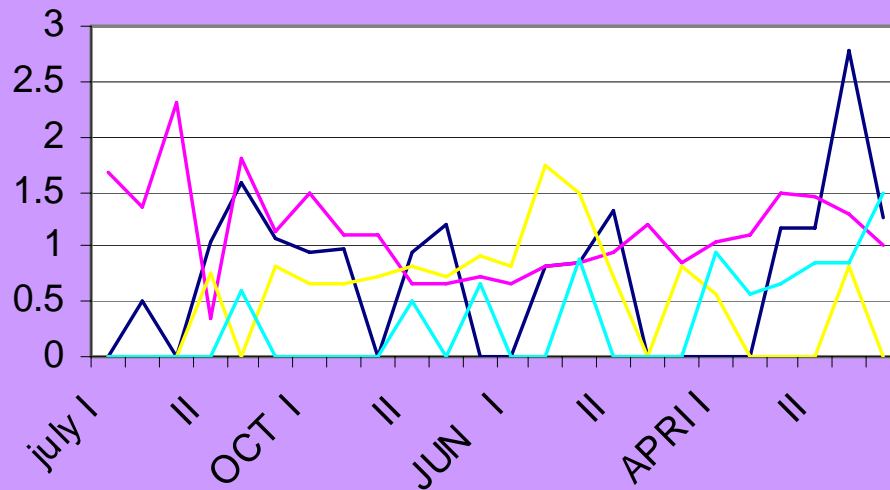
Weather data during study period.



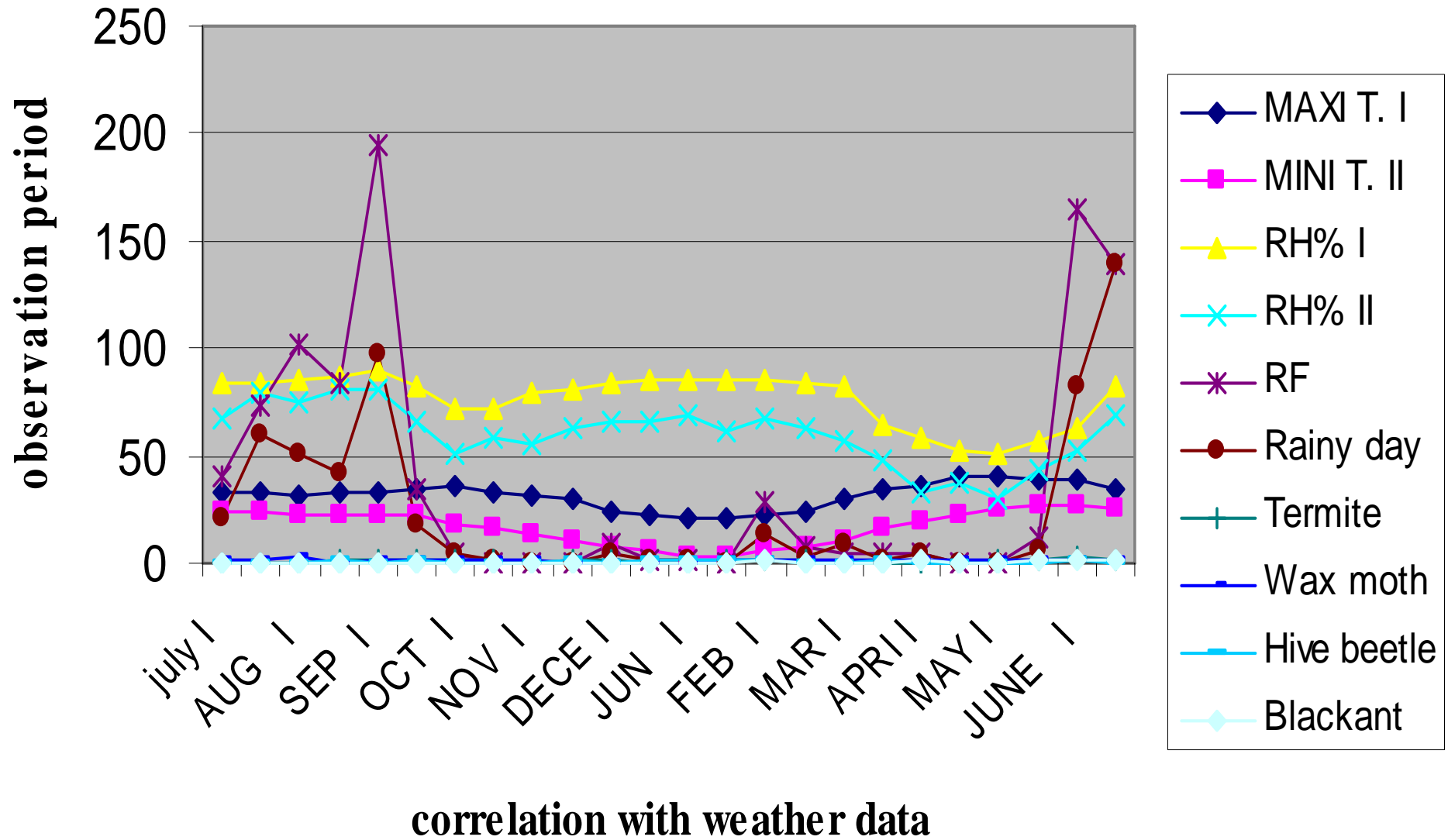
Weather parameters.

Occurance of bee pests & predators of honeybee.

Observation period
fort nightly



Mean of two year weather data 2006-2007,2007-08 during the study period



Conclusion

Influence of climatic variability's on the incidence of bee pests.

Weather Parameter	Termite	Wax moth	Hive Beetle	Black ants
Max. Temp	NS	NS	-0.615	NS
Min. Temp.	NS	0.758	-0.686	NS
Rainfall	0.628	NS	NS	NS
R.H. %	NS	NS	NS	NS



THANK YOU